

MAROONDAH ORCHID SOCIETY

INCORPORATED

MONTHLY NEWS LETTER

Lycastes are orchids of the
New World Tropics and Subtropics



Lycaste Club Emblem

Volume : 46 - Issue : 10

Next Meeting: Friday – 17 November 2023

Meeting begins at 8.00pm

Venue: St. Timothy's Catholic School
21 Stevens Road, Vermont.
(Melway, Map 62 Ref.G3)

Annual Sarcochilus Show (benching of orchids will also be held)

**ITEM OF THE EVENING: Winning Growers to Give
Commentary on Their Plants**

Topical Chat: Sarcochilus Culture – Members are invited to bring a sarc. plant they would like to be discussed.

Supper: Please bring a plate

Special Effort: Tickets at door \$1.00 or 3 for \$2.00

Sales Table: Pots, stakes, labels and hangers Leanne Le

President's Report

This is my first report as your newly elected president. It is with great pleasure and some trepidation that I take on this role.

On behalf of all members, I would like to take the opportunity to thank our immediate past president, Ron Coleman, for a marvellous job over the last three years, including during the very trying COVID epidemic.

Trophies From the Spring Show were presented at our October meeting, although some recipients weren't present. Those trophies will be provided to the winners in the near future.

Our October meeting included a very informative hands on session on de-flasking *Sarcophilus* conducted by David Cannon and assisted by Leanne Le. Members were invited to participate in mounting the seedlings onto cork or merbau backing boards and then taking one home. A few members discovered that an extra hand or two was needed when trying to attach the plants using fishing line.

Don't forget that the Christmas Dinner will be held on December 16th. **Payment by attendees needs to be finalised by Sunday December 3.**

Our next Club Meeting will include the *Sarcophilus* show. This is a spectacular show not to be missed. If you haven't been to Club Meetings for a while, put this one in your diary – it will be a beauty!

Michael Chivell

Christmas Dinner

Date: 15 December; Time: Arrive 6.30pm for 7.00pm; At St. Timothy's Vermont.

Cost: Members \$20, Non-members \$40 Children aged between 6 -12 years \$18 each and children under 6 years free.

**You can pay at the November meeting Or you can pay via direct debit to the following bank account – BSB: 063167 Account number: 10107735
Please remember to fill in the reference field with your name.**

Also please email me the name of any person with dietary requirement and the ages of child or children attending, at leorland@totalfundraising.com.au

Deadline for bookings is Sunday December 3.

Please note that the dinner will be in the main hall.

BYO: Drinks, glasses and cutlery.

There will also be a Kris Kringle so bring a wrapped gift to the value of \$10 for him, her, or either.

M.O.S. Inc. Patron: David Cannon

Life Members: The late Frank Date, Jim Foster-Johnson, David Cannon, Alan & Nancy Cockram, Dieter Weise, The late Barry Robinson, Susanne Redpath, Max Bomford, Cheryl Luth, G Moffat.

Current M.O.S. Inc. Committee:

President	Michael Chivell (M) 0402 568 217
Vice Presidents:	David Cannon (M) 0418 394 282 Ron Coleman
Secretary:	Leo Orland (M) 0419 884 492: email leorland@totalfundraising.com.au
Treasurer:	Ron Coleman (M) 0477 311 188
Committee:	Graeme Moffat (H) 9726 5793 Leanne Le (M) 0416 818 290 Genny Chivell (M) 0434 995 174 Jim Foster-Johnson (M) 0412 366 686 Edith Yu-Chan (M) 0411 378 096 Heather Coleman Claudia Ng

Membership Secretary:	Edith Yu-Chan
Newsletter:	Leo Orland
Floral Art:	Susanne Redpath (M) 0413 138 307
Website Manager	Heather Coleman
MOS Website Address	www.oscov.asn.au /mos
MOS Facebook Address	www.facebook.com/maroondahorchidsociety

REMINDER: Membership Renewal is Now Due










Fees are now due.

Adult (single) \$20.00, Family \$25.00, Junior (16 years and under) \$5.00

Or you can pay via direct debit to the following bank account –
BSB: 063167 Account number: 10107735

Please remember to fill in the reference field with your name. Thank you!

Interesting Plants from the October Meeting

		
<p>S. Kappl's Plectochilus Kilgra #6</p>	<p>J. Foster-Johnson's Masd. Rubicon 'Hackett's Creek'</p>	<p>C. Gunawan's Dendrobium nobile</p>
		
<p>T. Pham's Cym. Kola Cutie</p>	<p>L. Le's SLC Dals Buddy</p>	<p>D. Cannon's Sarc. Sunny</p>
		
<p>R & H Coleman's Cymbidium Olive Street Dinh</p>	<p>Steven and Jing's Onc. Var. Skinner 'Dancing Queen'</p>	<p>J. Wong's Masd. Copper Fire x Copper Wing</p>

Awards Presentation from the 2023 Spring Show



Trophy Given to Graeme and Merilyn Moffat in Recognition of their many years of Service to Maroondah Orchid Society



SARCOCHILUS SHOW NIGHT – 17 November 2023

The November meeting is our Sarcochilus Show Meeting. There will be a sash for the Champion Sarcochilus and prizes for the classes listed below.

Open section will stand alone and Intermediate and Novice will be classed together. The classes listed below –

Best Classic Shape - White	Best Classic Shape – Red/Pink	Best Classic Shape – Any other colour/combination of colours
Best Novelty Shape – open shaped plants. (e.g. Australis etc.	Best Specimen (Hybrid/Species)	Best Species
Best Seedling flowering for the first time.		

ORCHID SHOWS 2023

Show	Date/Time	Venue
Ringwood / Yarra Valley Orchid Society	Sat 4 Nov 9-4, Sun 5 Nov 9-3	Keystone Hall, Keystone Hall Civic Square, Croydon
CGOC Sarc Show	Sat 11 Nov 9-4, Sun 12 Nov 9-3	TBA

HOW TO GROW MASDEVALLIAS

Masdevallias are cool-growing, free-flowering orchids with compact plants that will often provide a succession of colourful flowers throughout the year. The flowers are produced in a variety of shapes, sizes and colours, sometimes complemented with a range of stripes or spots. Some 400 species grow in nature, mostly in Central and South America, the greatest concentrations being found in Colombia and Ecuador. Although these are tropical countries, most masdevallias grow in the mountains, where cool, humid conditions prevail. In Melbourne they grow happily in a shade house, provided that efforts are made to maintain cool, humid conditions on hot summer days.

POTTING

Most masdevallias have small, compact plants that can happily be accommodated in small squat pots of 75-100 mm diameter. The pots must have excellent drainage and some growers therefore prefer to use net pots or pots made of plastic mesh such as Gutterguard®. The preferred potting medium is live Sphagnum moss or equal parts of chopped moss and polystyrene foam. Best results are obtained if the plants are re-potted every two years or even more frequently. Re-potting is best carried out during cool weather in spring or autumn.

LIGHT, TEMPERATURE and AIR

Masdevallias flower best if grown in good light (for example, under 50% shade cloth) but a compromise must be struck in hot weather when extra shading may be needed to help reduce the temperature and increase the humidity. They grow best at temperatures between 5°C and 25°C. Most withstand temperatures down to freezing but prolonged temperatures over 30°C may cause the leaves of some species and their hybrids to burn and fall, thereby weakening the plants. Masdevallias enjoy free circulation of a cool, buoyant atmosphere. A high level of humidity may be maintained by growing ferns in the vicinity and damping down the surrounding area, especially on hot days.

WATERING

The potting mix must be kept constantly moist but never so wet as to become soggy. The mix should never be allowed to become completely dry; if it does so, soak the whole pot in water overnight to restore the moss to the desired condition. Frequent misting of the foliage using water in an atomiser spray reduces the need for frequent watering. Growing a number

of plants close together also helps to maintain a reasonable level of humidity. If you have only a few plants, it's a good idea to place them on a tray of damp river pebbles or moss.

FERTILISING

Masdevallias respond to weak applications of liquid fertiliser throughout the year. It is important to use these fertilisers at concentrations less than a quarter of those recommended by the manufacturer, otherwise the fertiliser may kill the Sphagnum moss used in the potting mix, reducing it to a soggy mess.

These cultural notes are kindly provided by the North-East Melbourne Orchid Society



THE LITTLE BLACK ANT, SCALE INSECT, MEALY BUG, APHID ALLIANCE by Ben Wallace

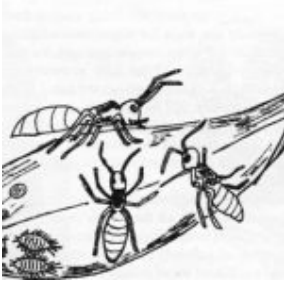
These four groups of insects can work hand-in-glove to make a living at the expense of your orchids. The last three literally suck sap from your plants for their own needs, and produce sugary exudates that ants then feed on. In turn the ants carry the sapsuckers to the choicest localities, such as young emerging leaves, expanding buds or active root tips, where the orchid's nutrient content is at its greatest. Loss of these nutrients from the plant can seriously affect its ability to grow and flower. Worse still, the insects may inject pathogenic viruses into the plant, thereby spelling its doom.

To deal with such a conspiracy requires a multi-pronged response from the grower. First you need to watch where the ants are running to and fro, so that you can discover where their nest is located. If it's in a pot, the nest is easily destroyed. Simply tip the plant and mix onto the soil outside your green house, remove the plant, spread the mix and spray both mix and plant with a mixture of Pest Oil® and pyrethrum. If the ant nest is beneath a concrete slab or in a brick wall, you'll need to use more guile and lay a bait of ant poison. Mortein Ant Sand® is an effective one that has been introduced recently but other types are also available.

Having dealt with the ringleaders, next get the subordinates. Close examination of all plants is important to locate infestations of scale, aphids and mealy bugs. Remember that they often hide in obscure places, such as down in leaf sheath bases, on buried roots and in other hidden spots. Remove all infested plants individually, and spray them with the above-mentioned mix, or use a soft toothbrush to apply it, mixed with detergent. It's important to use some

sort of surface-tension breaker (such as a soluble oil, detergent or methylated spirit) to penetrate the waxy coat of some insects. Don't apply more of these chemicals than necessary, as they may damage the plant's softer tissues.

Remember that it's important to deal with all the culprits, not just the sapsuckers doing the immediate damage.



LAST THOUGHTs

- Singing in the shower is fun until you get soap in your mouth. Then it's a soap opera.
- What did the ocean say to the beach? Nothing, it just waved.
- Why do seagulls fly over the ocean? Because if they flew over the bay, we'd call them bagels.
- I only know 25 letters of the alphabet. I don't know y.

If Undeliverable Return to:
The Hon. Secretary,
Maroondah Orchid Society Incorporated
P.O.Box 5076, Ringwood. Vic. 3134

NEWSLETTER



Collectors Corner/Garden World - You can get 10% off some items within the store by showing either your membership badge or membership card.

DISCLAIMER

Maroondah Orchid Society Incorporated, Executive and Committee will not take any responsibility for the results of any action taken on advice given or views expressed by any member or invited speaker at any meeting or show. Views and opinions in this Newsletter by authors of articles do not necessarily reflect the views and opinions of Maroondah Orchid Society Incorporated or its Executive or Committee.