

# MAROONDAH ORCHID SOCIETY

## INCORPORATED

# MONTHLY NEWS LETTER

Lycastes are orchids of the  
New World Tropics and Subtropics



Lycaste Club Emblem

Volume : 45 - Issue : 11

**Next Meeting: Friday – 16 December 2022**

**Venue: The top hall at St. Timothy's  
21 Stevens Road, Vermont.  
(Melway, Map 62 Ref.G3)**

### **ITEM OF THE EVENING: Christmas Dinner**

**Venue:** The top hall at St Timothy's.

**Arrival Time:** 6.30pm.

**What to bring:** BYO drinks, glasses and cutlery (food provided).

**Kris Kringle:** Bring a gift to the value of \$5 and mark His, Hers or Either.

**Special Effort:** Will be Christmas Hampers.

There will be no Sales Table but every member will receive a gift.

**Bench Competition:** There will be no judging but there will be a popular vote under two categories open and intermediate/novice.

Yearly prize winners will be announced.

## President's Report

Finally, we had a full year of monthly Club Meetings. Included were some great shows, Winter (although delayed), Spring (a great success) and Sarcophilus where there was one of the biggest displays in recent years.

It is great to have a steady flow of new members in recent months and we will welcome another couple at, possibly, the December Christmas Dinner or at our February Club meeting. At the November Club Meeting we presented plants to new members Glenda & Ronnie Vicedo and Kimmy Mak.

I am pleased at the number of members who have renewed their membership and that attendance has gradually increased over recent months.

I am looking forward to the Christmas Dinner to be held as our December meeting and am sure that it will be as successful as in past years. There will be Hampers as Special Effort prizes, a Kris Kringle segment, a Popular Vote for displayed plants and a gift plant bag for each membership for those in attendance.

For members who have not been in the best of health over recent months I wish you a speedy recovery. Have a great Christmas Season and I look forward to seeing you at the 2023 Club Meetings.

Ron Coleman

**M.O.S. Inc. Patron:** David Cannon

**Life Members:** The late Frank Date, Jim Foster-Johnson, David Cannon, Alan & Nancy Cockram, Dieter Weise, The late Barry Robinson, Susanne Redpath, Max Bomford, Cheryl Luth, G Moffat.

**Current M.O.S. Inc. Committee:**

<b>President</b>	Ron Coleman (M) 0477 311 188
<b>Vice Presidents:</b>	David Cannon (M) 0418 394 282 Vacant
<b>Secretary:</b>	Leo Orland (M) 0419 884 492 Email: <a href="mailto:leoorland@totalfundraising.com.au">leoorland@totalfundraising.com.au</a>
<b>Treasurer:</b>	Graeme Moffat (H) 9726 5793
<b>Committee</b>	Leanne Le (M) 0416 818 290 Daniel Tung Jim Foster-Johnson (M) 0412 366 686 Edith Yu-Chan (M) 0411 378 096 Heather Coleman Claudia Ng
<b>Membership Secretary:</b>	Edith Yu-Chan
<b>Newsletter:</b>	Leo Orland
<b>Floral Art:</b>	Susanne Redpath (M) 0413 138 307
<b>Website Manager</b>	Heather Coleman
<b>MOS Website Address</b>	<a href="http://www.oscov.asn.au/mos">www.oscov.asn.au /mos</a>
<b>MOS Facebook Address</b>	<a href="https://www.facebook.com/maroondahorchidsociety">www.facebook.com/maroondahorchidsociety</a>

## Interesting Plants from the November Meeting



D. Wiese's Phrag. caudatum



H. Truong's Den. Stardust



T. Pham's Mad.  
Coccinea Alba 'Blanca'



K. Balogh's Lycaste Macame  
'Aline'



D. Cannon's Cym.  
Sweet Devon



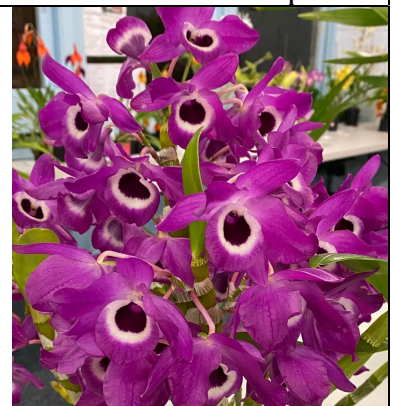
J. Foster-Johnson's  
Masd. Veitchi Candy  
Cane 'Good Strips'



E. & T. Styles's Masd.  
notosibirica



S. Kappl's Vanda ampullacea



J. Harnetty's Soft Cane  
Den. Star Sapphire



## Interesting Sarcs at November Meeting



G. McCully's Dove



S. Kappl's Dove 'Big Bird'



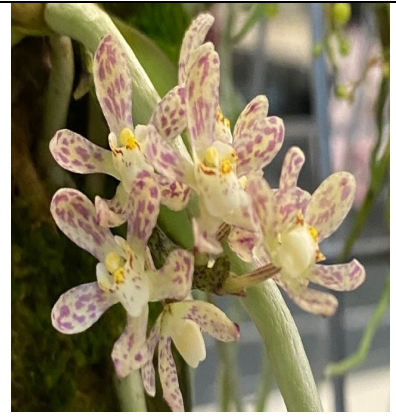
H. Truong's  
Kulnura Dazzle x Bunyip



R. & H. Coleman's Magic



D. Tung's Myola



S. Kappl's  
Peristerchilus Olive Grace



G. McCully's Fitzhart  
'Rusty Bucket'



G. McCully's Melba 'Barbara'  
x tridentata



T. Le's  
hartmannii

## BENCH COMPETITION November 2022

<b>JUDGES VOTE</b>	Phragmipedium caudatum	c	D. Weise
<b>POPULAR VOTE</b>	Dendrobium Stardust	c	H. Truong
<b>BEST IN SECTION</b>			
<b>Open</b>	Phragmipedium caudatum	c	D. Weise
<b>Intermediate</b>	Dendrobium Star Sapphire	c	J. Harnetty
<b>Novice</b>	Masdevallia coccinea Alba - Blanca	c	T. Pham
	<b>Open Section</b>		
<b>Intermediate Cymbidium</b>	1 <sup>st</sup> Doo Wop 'Dark Cherry'	c	C. Luth
<b>Miniature Cymbidium</b>	1 <sup>st</sup> Sweet Devon	c	D. Cannon
	2 <sup>nd</sup> Pee Wee	c	H. Truong
<b>Cymbidium Species</b>	1 <sup>st</sup> devonianum	c	C. Luth
	2 <sup>nd</sup> tigrinum 'Tigress'	c	C. Luth
	3 <sup>rd</sup> lowianum 'Compte de Hemptinne'	c	L. Orland
<b>Masdevallia Hybrid</b>	1 <sup>st</sup> Stripe King 'Beenak'	c	K. Balogh
	2 <sup>nd</sup> Veitchi Candy Cane 'Good Stripe'	c	J. Foster-Johnson
	3 <sup>rd</sup> Paritzan 'Elegant Rose'	c	K. Balogh
<b>Masdevallia Species</b>	1 <sup>st</sup> infracta	c	S. Kappl
	2 <sup>nd</sup> notosibirica	c	E. & T. Stiles
	3 <sup>rd</sup> decepatrix	c	S. Kappl
<b>Masdevallia Other</b>	1 <sup>st</sup> Copperwing 'Sunburst'	c	J. Foster-Johnson

	2 <sup>nd</sup> Super Nova ‘Perfect’	c	K. Balogh
	3 <sup>rd</sup> (Kimana x Rein King) ‘Sunset Pink’	c	E. & T. Stiles
<b>Dendrobium</b>	1 <sup>st</sup> Stardust	c	H. Truong
	2 <sup>nd</sup> Hamana Lake	c	L. Le
	3 <sup>rd</sup> Mild Yumi ‘Lotus’	c	J. Foster-Johnson
<b>Lycaste</b>	1 <sup>st</sup> Macama ‘Aline’	c	K. Balogh
<b>Australian Native Dendrobium Species</b>	1 <sup>st</sup> Den. fleckeri	c	S. Kappl
	2 <sup>nd</sup> Den. lichenastrum	c	E. & T. Stiles
<b>Australian Native Hybrid</b>	1 <sup>st</sup> Cym. Kuranda	c	H. Truong
<b>Paphiopedilum Species</b>	1 <sup>st</sup> hirsatissimum	c	S. Kappl
<b>Oncidiinae Large</b>	1 <sup>st</sup> Maclellanara Pagan Love Song ‘Ruby Charles’	c	L. Orland
<b>Laelinae Intermediate</b>	1 <sup>st</sup> Cat.Hunabu Surprise x (Cherry Chip x Walkenara)	c	J. Foster-Johnson
<b>Laelinae Cluster &amp; Novelty</b>	1 <sup>st</sup> Epidendrum Comet Valley ‘Orange’	c	E. & T. Styles
<b>Laelinae Species</b>	1 <sup>st</sup> Cat. Intermedia v alba	c	J. Foster-Johnson
	2 <sup>nd</sup> Epidendrum melanoporphyreum	c	E. & T. Styles
	3 <sup>rd</sup> Cat. coccinea	c	C. Luth
<b>Any Other Hybrid</b>	1 <sup>st</sup> Zygo. Artur Elle ‘Purple Magic’	c	L. Olrand
<b>Species Any Genera – The America’s</b>	1 <sup>st</sup> Phrag. caudatum	c	D. Weise
	2 <sup>nd</sup> Arpophyllum gigantum	c	K. Balogh
	3 <sup>rd</sup> Stelis papaquerensis	c	K. Balogh
<b>Species Any Genera – Asia</b>	1 <sup>st</sup> Vanda ampullacea	c	S. Kappl
	2 <sup>nd</sup> Den. victoria reginae	c	E. & T. Stiles

	3 <sup>rd</sup> Coel. nitida	c	C. Luth
	<b>Intermediate Section</b>		
<b>Immediate Cymbidium</b>	1 <sup>st</sup> Unknown	c	J. Stanley
<b>Miniature Cymbidium</b>	1 <sup>st</sup> Pee Wee	c	J. Stanley
<b>Phalaenopsis</b>	1 <sup>st</sup> Unknown	c	J. Harnetty
<b>Dendrobium</b>	1 <sup>st</sup> Soft Cane Star Sapphire	c	J. Harnetty
<b>Any Other Hybrid</b>	1 <sup>st</sup> Zygo. Adelaide Meadows	c	J. Harnetty
	<b>Novice Section</b>		
<b>Intermediate Cymbidium</b>	1 <sup>st</sup> Olive Street 'Dinh'	c	R. & H. Coleman
<b>Miniature Cymbidium</b>	1 <sup>st</sup> Cricket	c	R. & H. Coleman
<b>Masdevallia Species</b>	1 <sup>st</sup> coccinea	c	T. Pham
<b>Dendrobium</b>	1 <sup>st</sup> Superstar	c	C. Gunawan
<b>Paphiopedilum Species</b>	1 <sup>st</sup> venustum	c	C. Gunawan
<b>Oncidiinae Medium</b>	1 <sup>st</sup> Tiger Brew	c	G. Chivel
<b>Seedling Flowering For The First Time</b>			
<b>Open</b>	1 <sup>st</sup> Masd. Super Nova x Orinoco	c	E. & T. Stiles

### Club Cultural Awards

Sarc. Dove 'Big Bird'	S. Kappl
Masd. Coccinea V. Alba 'Blanca'	T. Pham
Masd. Veitchi Candy Cane 'Good Stripes'	J. Foster-Johnson
Masd. Notosibirica	E. & T. Stiles
Arpophyllum gigantum	K. Balogh
Den. Stardust	H. Truong
Cym. Sweet Devon	D. Cannon

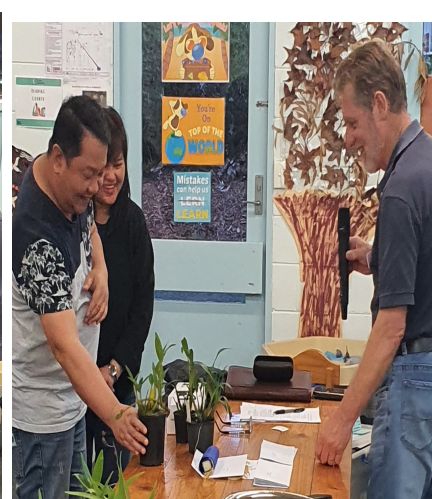


## Sarcophilus Night Show Results

<b>Champion Sarcophilus of the Night</b>	Dove	c	G. McCully
<b>Open</b>			
Best Classic Shape - White	1 <sup>st</sup> Dove	c	S. Kappl
	2 <sup>nd</sup> Judy 'Cheryl'	c	D. Cannon
Best Classic Shape – Red/Pink	1 <sup>st</sup> Kulnara Dazzel 'Bunyip'	c	H. Truong
	2 <sup>nd</sup> Allure 'Harry'	c	D. Tung
Best Classic Shape – Any Other Colour/Combination of Colours	1 <sup>st</sup> Myola	c	D. Tung
	2 <sup>nd</sup> Opel	c	S. Kappl
Best Novelty Shape – Open Shaped Plants (e.g. Australis etc.)	1 <sup>st</sup> Perist Olive Grace	c	S. Kappl
	2 <sup>nd</sup> Elise	c	E. & T. Stiles
Best Species	1 <sup>st</sup> falcatus	c	K. Balogh
	2 <sup>nd</sup> hartmanii	c	C. Luth
Best Speciman (Hybrid/Species)	1 <sup>st</sup> Dove	c	S. Kappl
	2 <sup>nd</sup> (Heidi x Karen x Sighing)	c	D. Cannon
<b>Other Than Open Section</b>			
Best Classic Shape - White	1 <sup>st</sup> Dove	c	G. McCully
	2 <sup>nd</sup> Heidi	c	T. Le
Best Classic Shape – Red/Pink	1 <sup>st</sup> Magic	c	R. & H. Coleman
	2 <sup>nd</sup> Voodoo x Elegense	c	G. McCully

Best Classic Shape – Any Other Colour/Combination of Colours	1 <sup>st</sup> Fitzhart	c	G. McCully
	2 <sup>nd</sup> George Clothup	c	G. McCully
Best Novelty Shape – Open Shaped Plants (e.g. Australis etc.)	1 <sup>st</sup> Melba x tridentatus	c	G. McCully
	2 <sup>nd</sup> Zoe Deed Pink x (Bernie Klein x Fitzhart)	c	G. McCully
Best Speciman (Hybrid/Species)	1 <sup>st</sup> Dove	c	G. McCully
	2 <sup>nd</sup> Maria	c	J. Wong
<b>Seedling Flowering For The First Time</b>			
<b>Open</b>	1 <sup>st</sup> Nicky's Firemist	c	L. Orland
	2 <sup>nd</sup> Gabriele x Lyn No. 5	c	S. Kappl

## Photos from the November Meeting







## REJUVENATING ORCHIDS

by Alan Hope

Orchid growers often need to attend to an orchid that is old, pot-bound or shows signs of decline. Previous re-potting may have been neglected or the plant, having been recently acquired at an orchid auction, nursery or as a gift, is in poor condition. Damage to the plant by frost, sunburn, insect bites or various rots and fungal attacks may also require remedial action. Signs that an orchid requires attention include weak and straggly growth, moss on the surface of the mix, dieback, rot and poor flowering.

Plants that have overgrown their pots may also need attention. However, first assess whether you wish to keep the plant, as space and resources are scarce and your effort may be better spent on other plants. Typically, friends and relatives may have unknowingly donated diseased plants, more often than not cymbidiums that have belonged to the family for some time. It is probably in the best interests of your collection to discard such family heirlooms. Re-potting requires the complete removal of the old orchid mix and replacement with new mix in a new or sterilized pot of an appropriate size. Any dead portions of plant should be removed with sterilized secateurs and the plant sprayed for pests such as scale. The re-potted

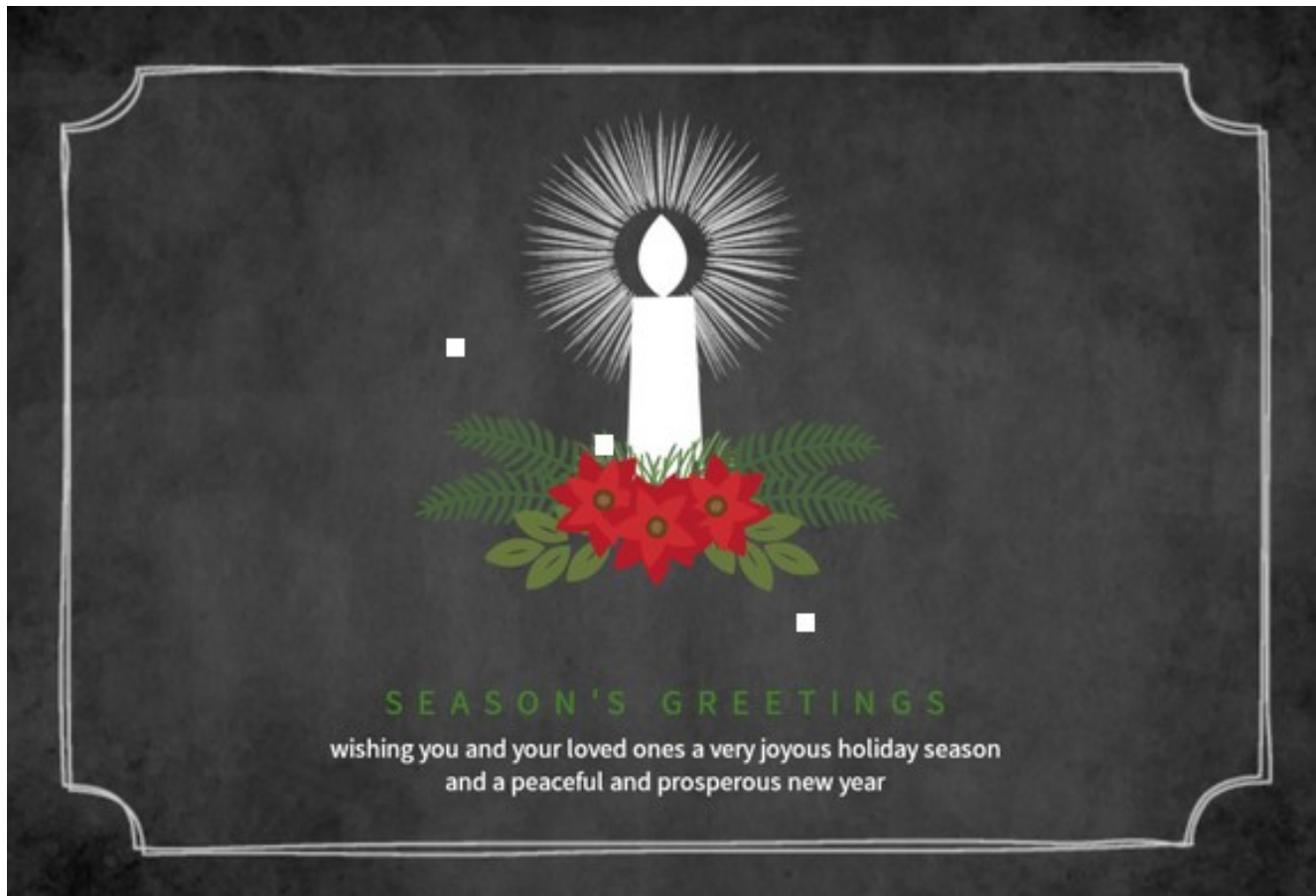
plant should also have some long-life fertilizer scratched in around the edge of the pot, and then watered well and placed in a protected area off the ground to re-establish.

Highly valued plants that would be difficult and/or costly to replace present a greater challenge. In many cases only a small part of the plant may survive, perhaps a single pseudobulb, cane or growth. For cymbidiums and other orchids with bulbs, cleaning up the back-bulb and placing it with fresh sphagnum moss in an inflated plastic bag, offers a good chance of new growth being generated. Some genera, such as lycastes, will often produce a new growth only if two or more joined pseudobulbs are used. Orchids with bare canes (e.g. dendrobiums), a creeping growth habit (e.g. bulbophyllums) or ones with no roots (all genera) are best tackled during the growing season (spring-summer-early autumn). The best option is to find a piece of the plant with a leading growth, as this is the most vigorous. However leafless canes, as is the case with many dendrobiums, may be all that is left to work with. If so, the canes can be cleaned and cut into sections containing two or three nodes. Each section should then be placed horizontally on a bed of live sphagnum moss and pinned down with small pieces of bent wire. It may take some time for the nodes to produce new growths.

Orchids with a creeping growth habit, such as bulbophyllums and epidendrums, should be restarted by attachment to a mount. Placing fresh sphagnum moss around (but not under) the growth helps to retain moisture and allows the emerging roots to attach themselves to the mount. Both the growth and surrounding moss should be fastened firmly to the mount with twisty-tie, and the plant then regular misted, especially during hot, dry weather. Root loss is a serious problem and paphiopedilums are among those orchids that can lose all their roots. I have had best results re-planting these plants in fresh sphagnum moss in a small pot. Secure the plant with a small wooden skewer to avoid movement and place it in a sheltered, shady position to recover. Once again patience is required as it can take many months for some paphiopedilum plants to re-grow roots, if ever!

Finally, how do you rejuvenate plants devastated by rot or fungal attack? The rot may move so quickly that the whole plant is at risk and remedial action is required without delay. The affected section of plant should be removed with a sterilized knife, razor blade or scissors and appropriate fungicidal sprays or sealants then applied to minimize further outbreak.





## LAST CHRISTMAS THOUGHTs

Why did Santa's helper feel sad?  
He had low elf-esteem

Why did Santa and Mrs. Claus extend their garden?  
They love to hoe hoe hoe.

Why is it getting harder to buy Advent calendars?  
Because their days are numbered.

What is Santa's dog's name?  
Santa Paws.

When Santa doesn't want to do something, what does he say?  
"Snow thanks!"

How do elves respond when Santa takes attendance?  
Present!

What does Mrs. Claus sing to Santa on his birthday?  
"Freeze a jolly good fellow!"

If Undeliverable Return to:  
The Hon. Secretary,  
Maroondah Orchid Society Incorporated  
P.O.Box 5076, Ringwood. Vic. 3134

## NEWSLETTER



**Collectors Corner/Garden World** - You can get 10% off some items within the store by showing either your membership badge or membership card.

### DISCLAIMER

Maroondah Orchid Society Incorporated, Executive and Committee will not take any responsibility for the results of any action taken on advice given or views expressed by any member or invited speaker at any meeting or show. Views and opinions in this Newsletter by authors of articles do not necessarily reflect the views and opinions of Maroondah Orchid Society Incorporated or its Executive or Committee.